

# ARGONAUT

## WIDESPREAD LAVATORY FAUCETS

Model #:  
AG210-1



### BEFORE YOU BEGIN YOUR INSTALLATION:

1



Turn off water supply.

2



Observe all local  
plumbing codes.

3



Inspect plumbing for signs of  
damage. Replace as necessary.

4



**DO NOT** use petroleum based  
products on this faucet.

### REQUIRED TOOLS:



Adjustable Wrench



Phillips Screwdriver

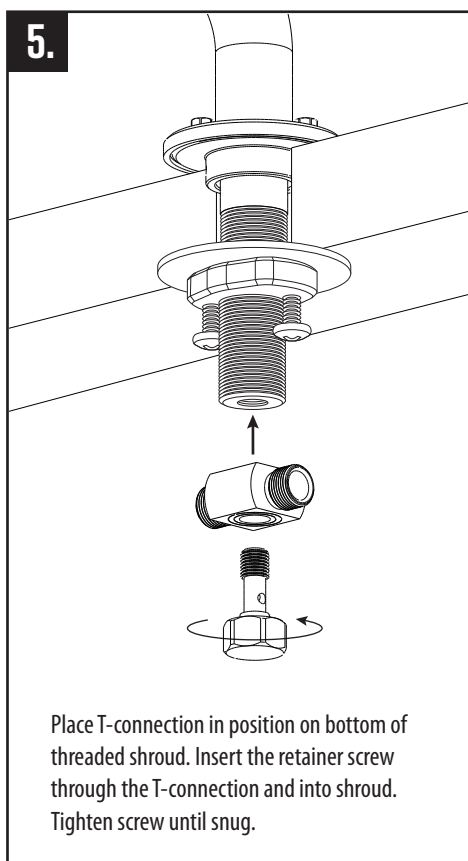
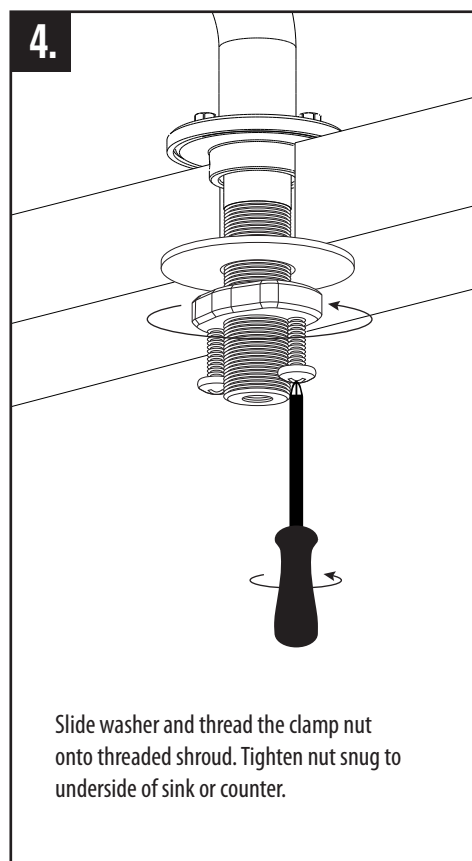
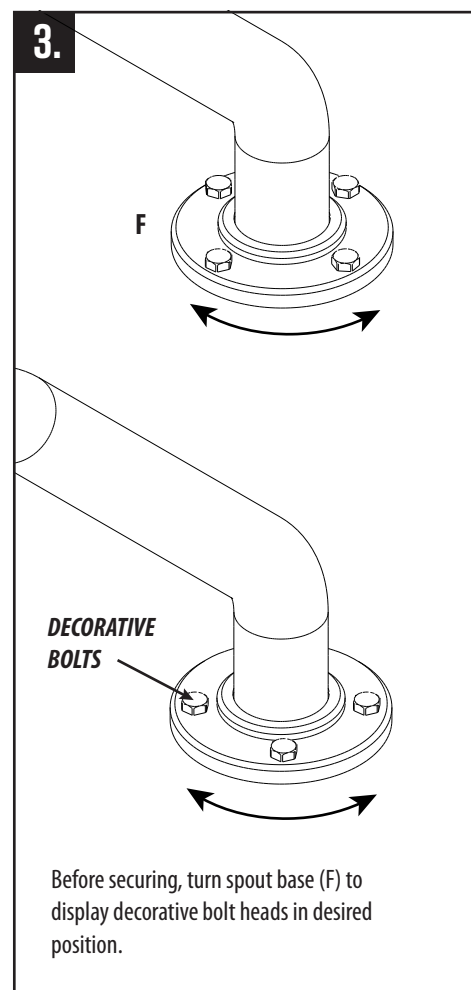
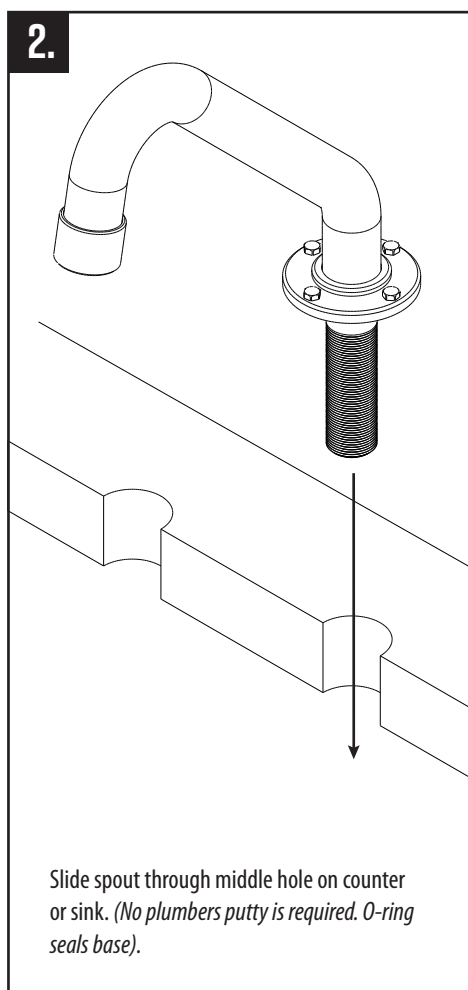
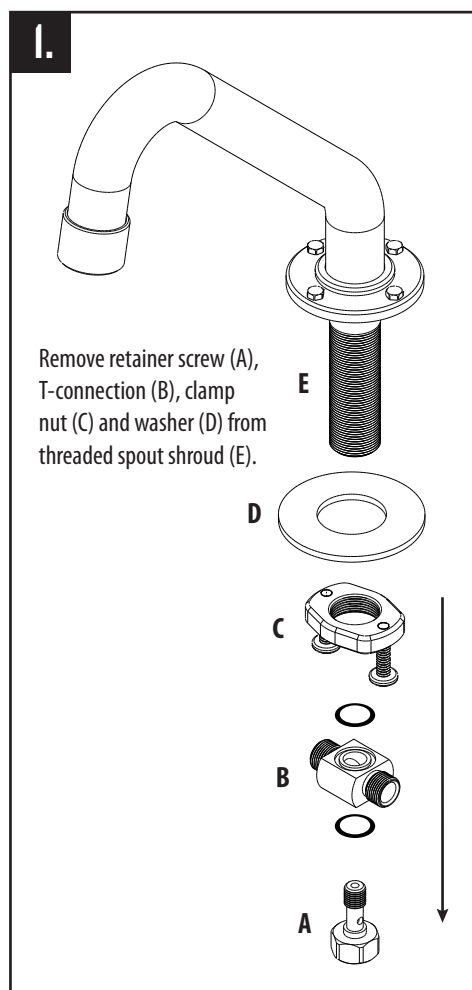


Channel Locks

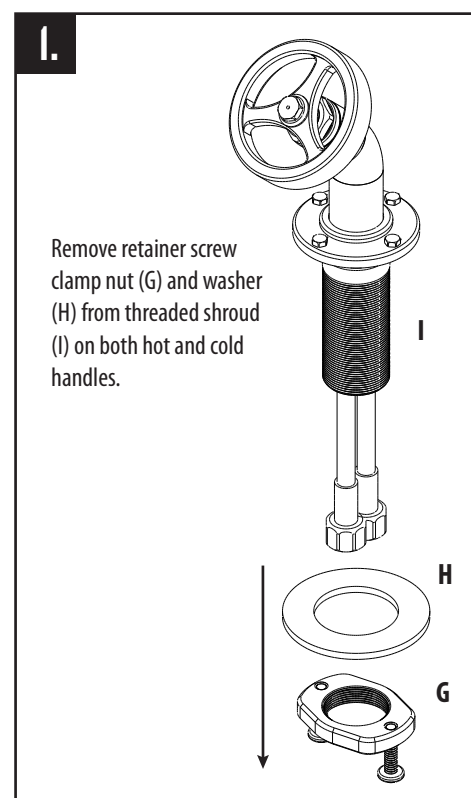
**ASPECT**  
BY WATERSTONE

1-888-304-0660 • 951-304-0520  
[www.aspectfaucets.com](http://www.aspectfaucets.com)  
AG210-1- REV A

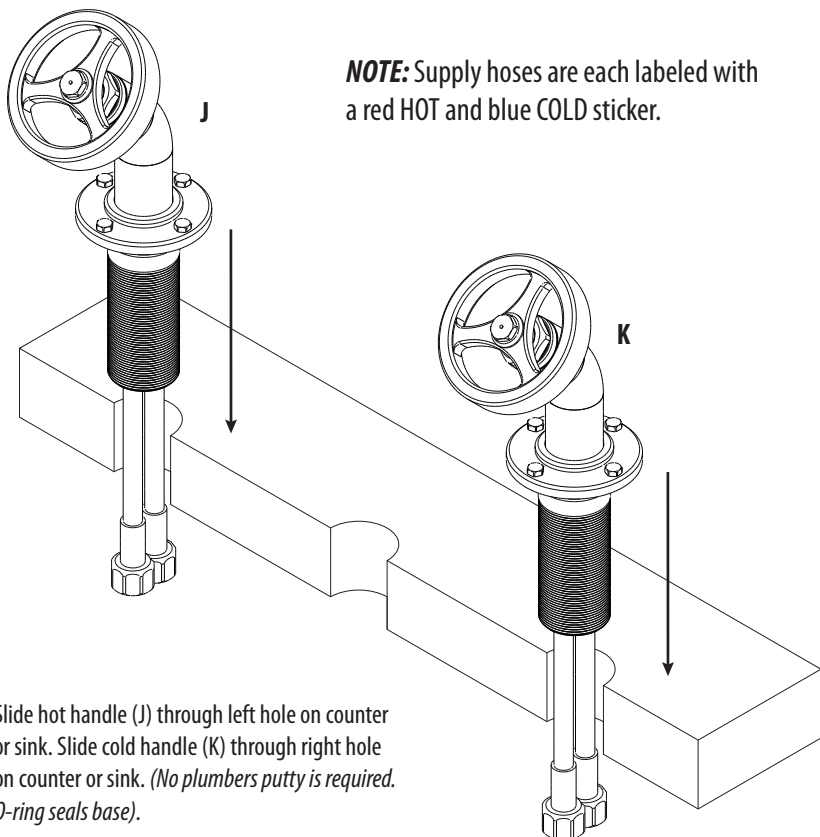
## SPOUT INSTALLATION



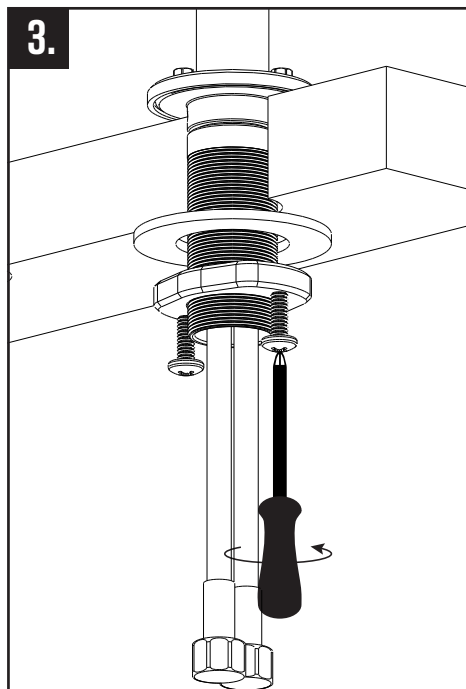
## HANDLE INSTALLATION



2.



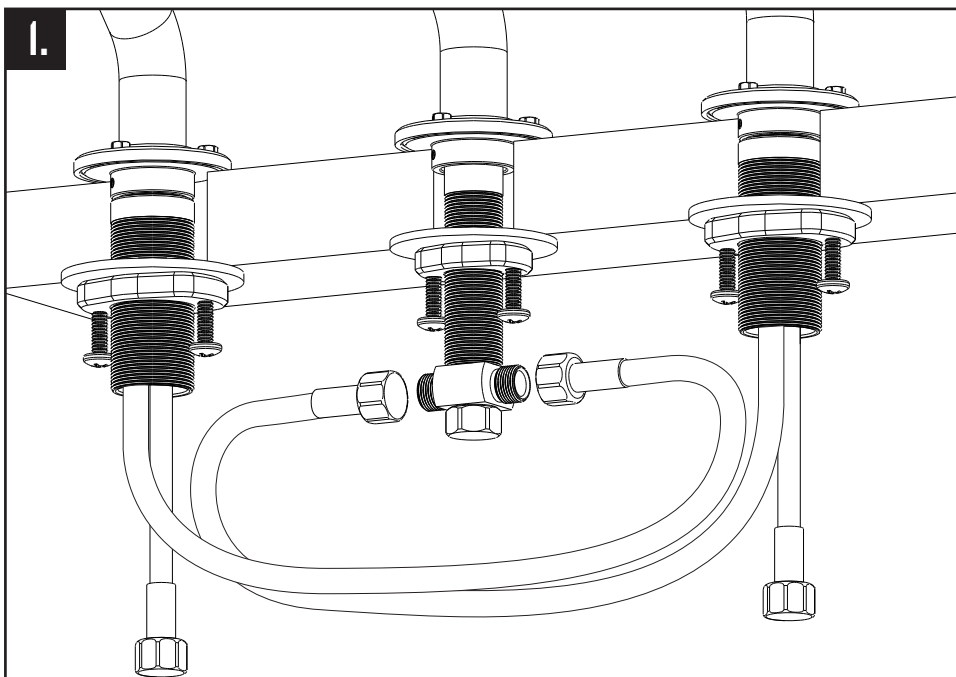
3.



Align both handles into desired position before securing. Slide washers and thread the clamp nuts onto shrouds. Tighten nuts snug to underside of sink or counter.

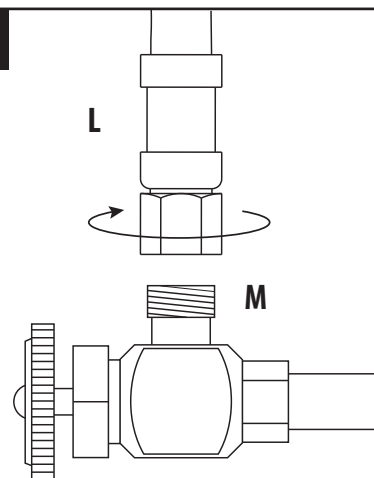
## CONNECTING SUPPLY HOSES

1.



Carefully position all supply hoses so they will not interfere with each other. The inlet mix hoses are in front and do not have the hot or cold label. To avoid kinking, attach the inlet hoses to the opposite side of the T-connection. Connect the inlet mix hoses from the handles as shown. Tighten nut by hand plus 1/4 turn with a wrench until snug. **DO NOT** use teflon tape or plumbers putty.

2.



Before connecting supply hoses, flush supply stops to clear any debris. Place a bucket underneath stops and run water for 5 to 10 seconds. Turn water off. Carefully position hot and cold supplies so they will not interfere with other hoses. Connect supply hoses (L) to supply stops (M). Tighten nut by hand plus 1/4 turn with a wrench until snug. **DO NOT** use teflon tape or plumbers putty. Turn water back on and check for leaks.